

Differential Pressure Based Therapeutic Massage Device

Integrate expansion massage techniques into your therapy protocols

sales@lymphatouch.com | www.lymphatouch.com



Lymphatouch® uses a pulsating vacuum and mechanical high-frequency vibration to activate body's lymphatic circulation and stretching fascia structures

Easy on the patient, easy on the therapist

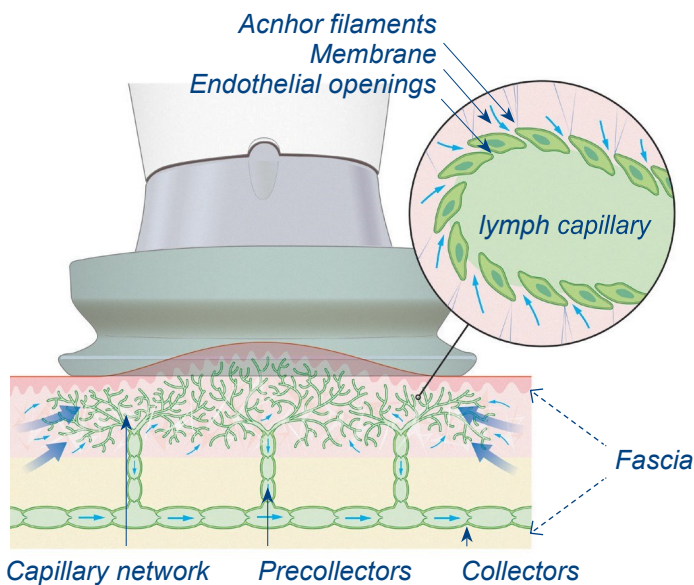
Lymphatouch® is a versatile and effective therapy device for every professional therapy center. Though benign in application, this system can offer multiple, easily adaptable protocol parameters that provide dynamic physiological short and long term results. Lymphatouch® treatment has several benefits, including it:

- Improves lymphatic circulation^[1]
- Improves secondary lymphedema ^[3]
- Relieves fascia structures and muscle spasms^[4]

Lymphatouch® treatment can be applied to several indications, including lymphedema, swelling, scarring, and fascia tightness ^[4]



www.lymphatouch.com



Picture: The enlargement picture above exemplifies a cross section of the lymphatic capillary network. The anchor filaments are attached to the surrounding tissue, e.g. to the fascia structure. The stretching of these filaments dilates the endothelial openings.

LymphaTouch® is a device based on vacuum where the pressure, pulsation, and vibration can be precisely controlled. LymphaTouch® expands and stretches the skin and the tissue underneath pulling anchor fibers to dilate the endothelial openings of the lymphatic capillaries.^[2] Simultaneously, the expansion of fascial and connective tissue structures creates space for blood circulation and lymph flow.

The vacuum created by LymphaTouch® causes fluid to flow from higher pressure area towards the lower pressure area. Metabolic waste flows from interstitial space through lymphatic capillaries and pre-collectors to the lymphatic collectors. In addition, the pumping mechanism of the lymphatic collectors is activated causing the lymph flow to increase further.

References

- [1] Vuorinen V-P, Airaksinen Olavi, (2009) A new vacuum suction device for management of lymphedema, Program & Abstract book pp. 118., 22nd International Congress of Lymphology, 21-25 September 2009, Sydney, Australia
- [2] J. T. Iivarinen, R. K. Korhonen, and J. S. Jurvelin (2013) Experimental and computational analysis of soft tissue mechanical response under negative pressure in forearm, *Skin Research & Technology*, John Wiley & Sons, DOI: 10.1111/j.1600-0846.2012.00652.x, Vol 19, Issue 1, pp. e356-e365
- [3] Ville-Pekka Vuorinen, Jarkko Iivarinen, Jukka Jurvelin, Olavi Airaksinen (2013) Lymphatic therapy using negative pressure, A clinical study with the LymphaTouch device, Research Report #5320003/221, Finnish Funding Agency for Technology and Innovation
- [4] Internal data on file

PhysioTouch® is a registered trademark of HLD Healthy Life Devices Ltd. HLD Healthy Life Devices Ltd is ISO 9001:2008 and ISO 13485:2003 certified company. PhysioTouch® is CE certified and FDA Class I Exempt as a therapeutic massager in the US. Caution: Federal law restricts this device to sale by or on the order of a healthcare professional.